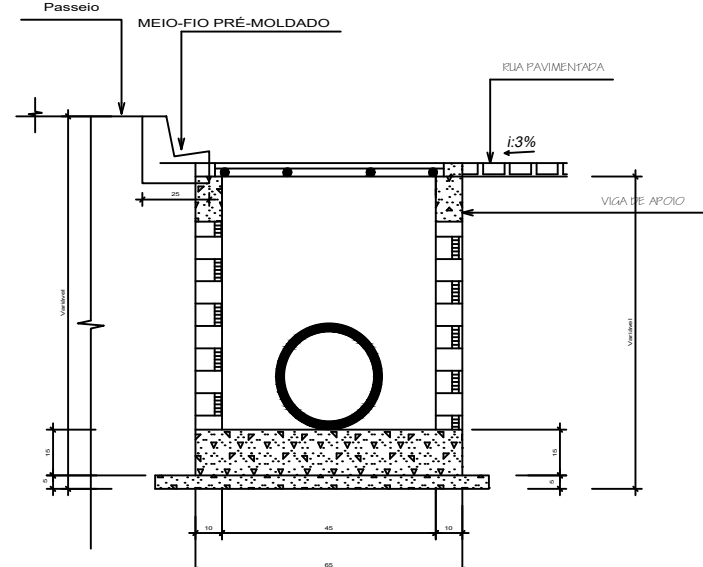
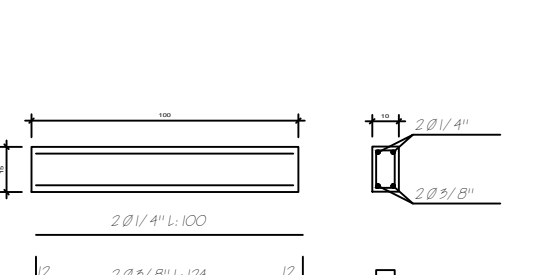
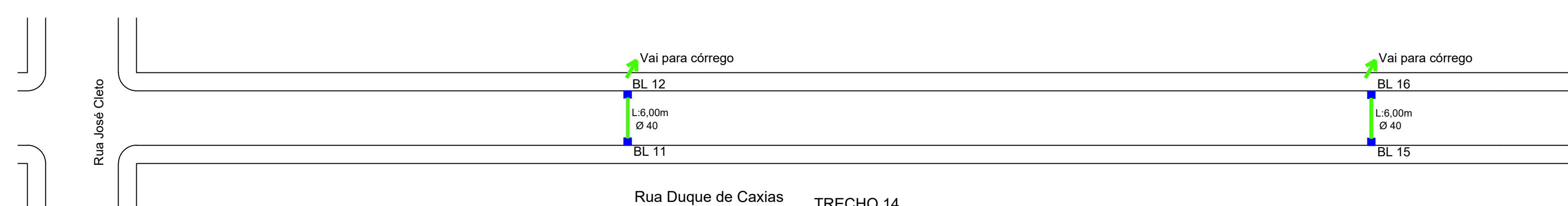
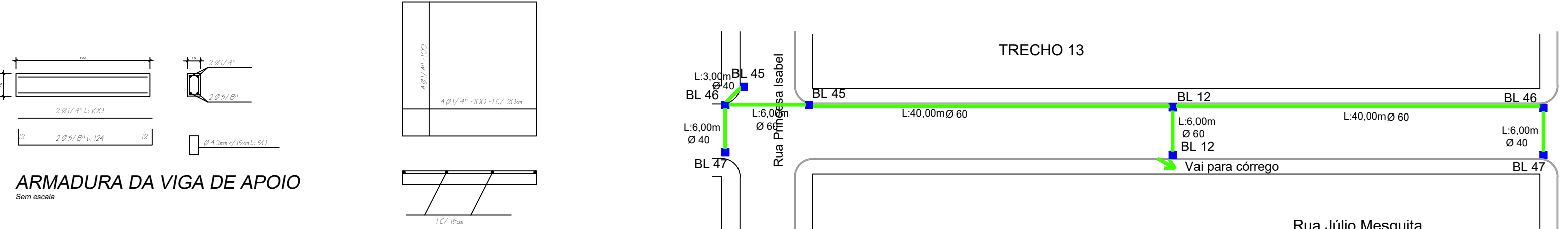
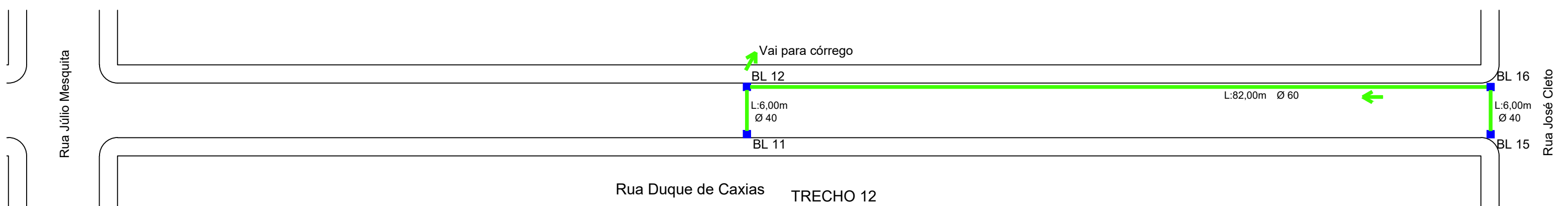
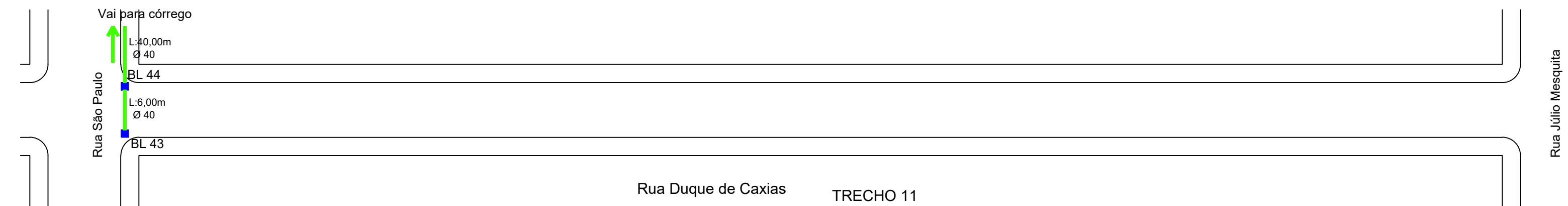
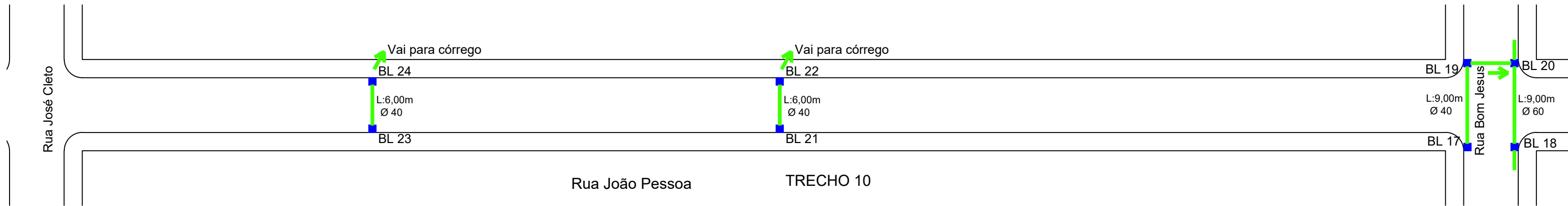
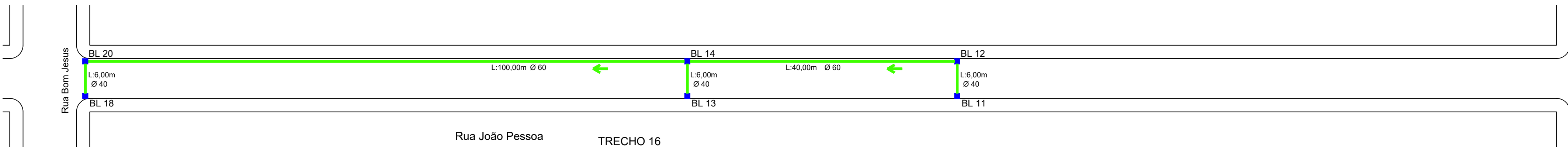
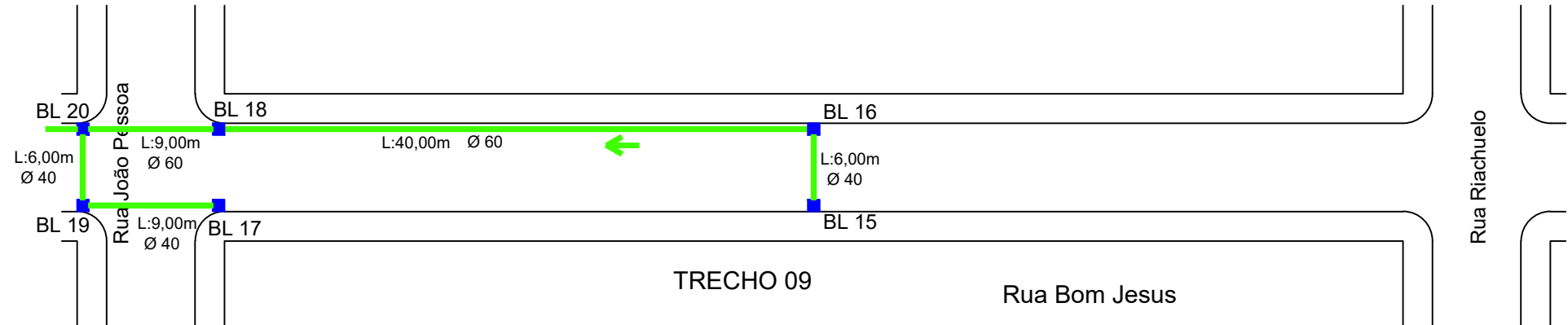
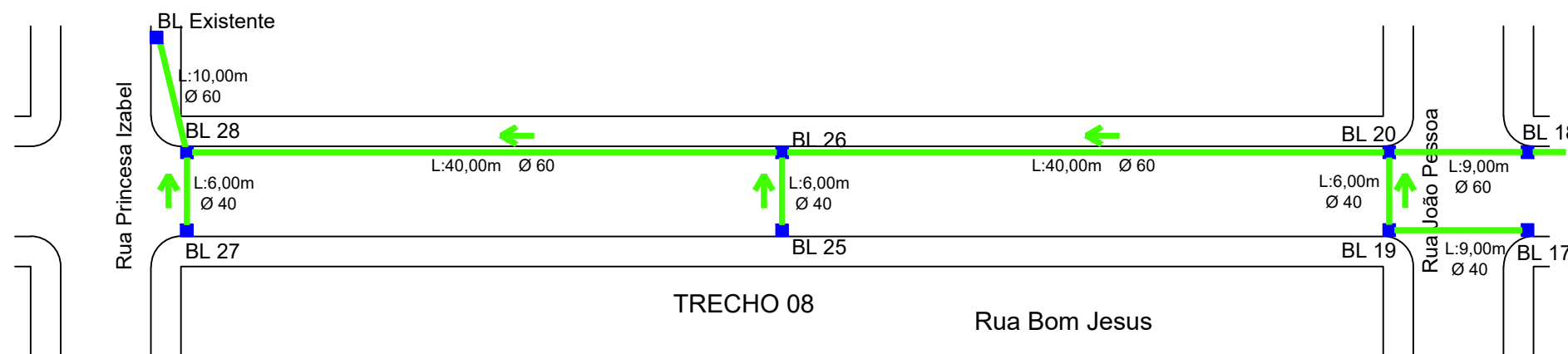
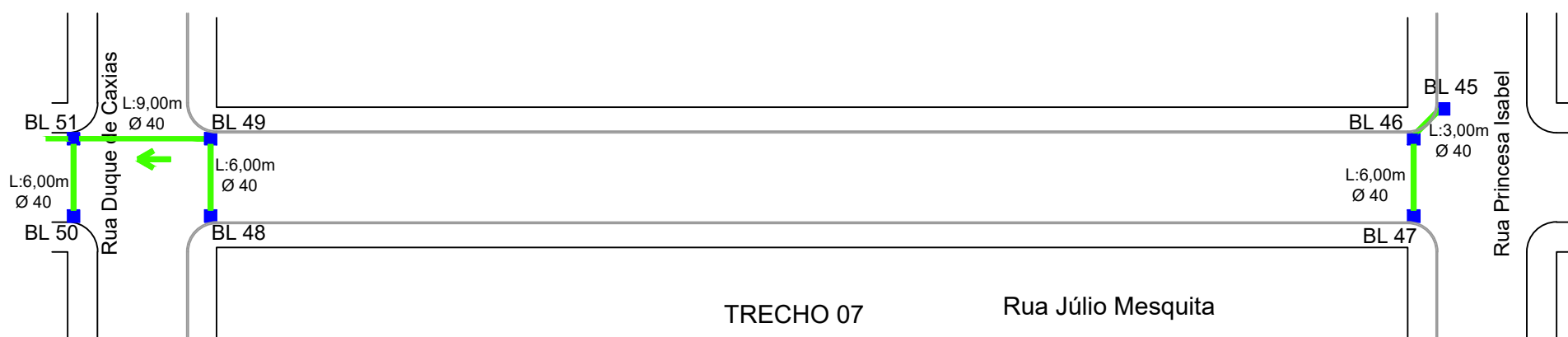
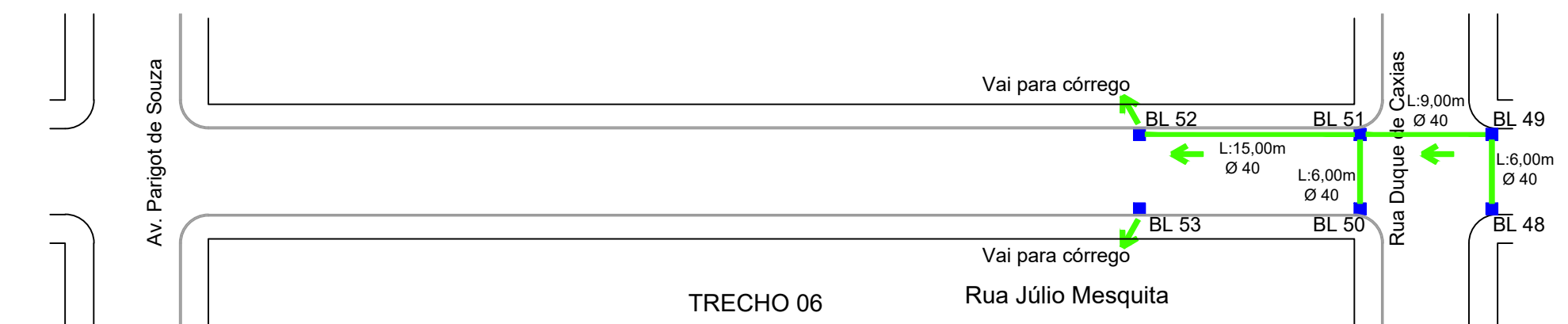


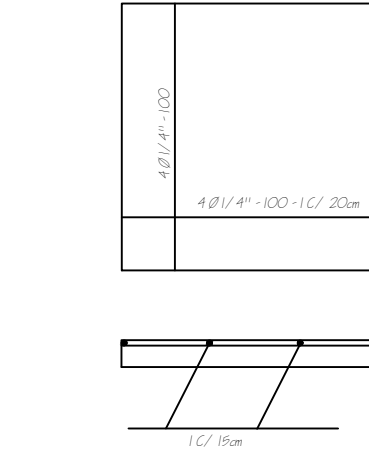
DETALHE ASSENTAMENTO TUBO
Sem escala



CORTE AA'
Sem escala



ARMADURA DA VIGA DE APOIO
Sem escala



ARMADURA DA BASE (FUNDO)
Sem escala

PREFEITURA MUNICIPAL DE CRUZEIRO DO IGUAÇU - PR DEPARTAMENTO DE URBANISMO / DIVISÃO DE ENGENHARIA AV. 13 DE MAIO, 906 - FONE: (046) 3572-8000 - CEP: 85.598-000			
ADMINISTRAÇÃO	RESP. TÉCNICO	4/5	
OBRA	PROJETO	PAVIMENTAÇÃO	
PAVIMENTAÇÃO ASFÁLTICA COM CBUQ	ÁREA		
ESPECIFICAÇÕES	DATA	JULHO 2023	
PLANTA BAIXA - DRENAGEM	LOTE		
LOCAL	ESCALA	1:40	
DISTRITO FOZ DO CHOPIM	ARQUIVO	Departamento de Engenharia 2023 Pavimentação Foz do Chopim_CBUQ	
MUNICÍPIO	ESTADO	CRUZEIRO DO IGUAÇU PARANÁ	